



## Features

- The all new stainless steel RC6 Series utilises 6mm/7mm (1/4") chain spliced to 12mm (1/2") three strand or 8-braid (plait) rope.
- The RC6 features Maxwell's revolutionary, and patented, new Wave Design™ chainwheel. Refer below for more information about this innovative feature.
- Providing most of the features of the larger RC8 (refer pages 6 and 7), the RC6 has been designed with the smaller, trailer boat market in mind.
- The in-line, vertical gearbox and motor means quick and easy installation by either the boat yard or the DIY aftermarket customer.
  - An inexpensive, high performance and great looking windlass; the RC6 is built for durability and years of trouble free use.
  - The RC6 is a Low Profile unit (no optional capstan drum).

Every Maxwell automatic rope/chain windlass is available with all the necessary components for fully automatic dual direction control in a competitively priced package.

## SPECIFICATIONS

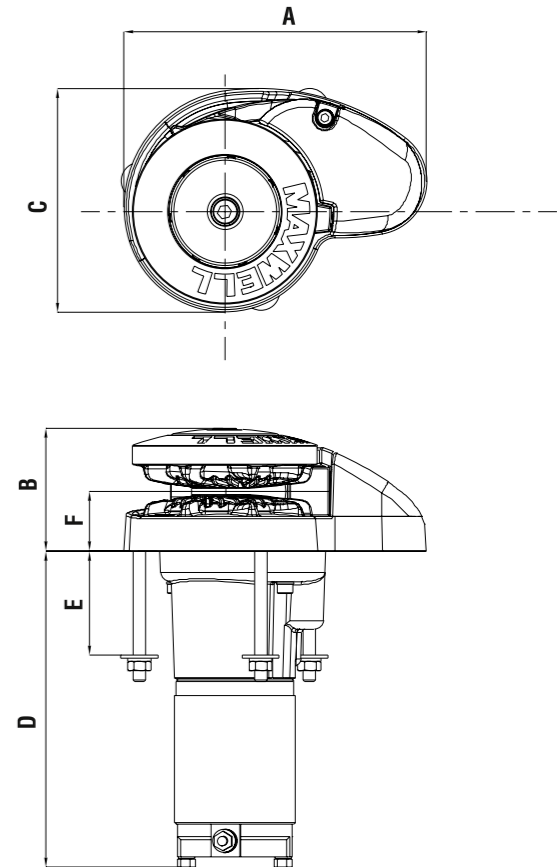
Model	RC6
Maximum Pull	300kg 660lbs
Chain Short Link	6mm/7mm 1/4"
Rope Size (Nylon)* (3 strand or 8 plait recommended)	12mm 1/2"
Chain Speed (Anchor Retrieval)	24m/min 79ft/min
Rope Speed (Anchor Retrieval)	21m/min 69ft/min
Power Supply (DC)	12 or 24V
Motor Power	500W
Net Weight	8.5kg 18.7lbs

\* refer to owners manual for rope size variations.

## DIMENSIONS

Model	RC6
A	196mm 7 3/4"
B	80mm 3 3/16"
C	145mm 5 3/4"
D	205mm 8 1/8"
E	65mm 2 1/2"
F	39mm 1 9/16"

The stainless steel RC6 and RC8 Series of automatic rope/chain anchor winches are Maxwell's newest additions to the highly successful RC10 Windlass Range



RC6 windlass



RC6 showing, 'fast install', in-line vertical gearbox and motor

### STANDARD EQUIPMENT REQUIRED FOR DUAL DIRECTION CONTROL

- Circuit breaker/isolator panel
- Up/Down remote control panel
- Emergency 'free fall' activation lever
- Dual Direction Solenoid

### OPTIONS

- AutoAnchor™ Equipment
- Compact Remote
- Foot Switches
- Chain Stopper
- Chain Snubber

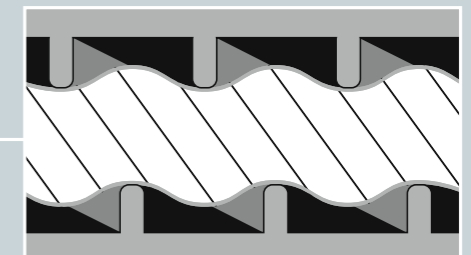
**3 YEAR**  
Limited Warranty

**Important:** Maxwell windlasses must be used in conjunction with a chain stopper and/or alternative snubbing device to take the load off the windlass while laying at anchor. The chain stopper and alternative snubbing system should also be used to secure the anchor in the fully raised position while under way.

## MAXWELL'S REVOLUTIONARY NEW CHAINWHEEL

Maxwell once again leads the market in innovative thinking with the introduction of their latest Wave Design™ chainwheel. This patented rope/chain wheel incorporates two unique design concepts that greatly improve the handling and control of the rope/chain spliced rode. The outer ribs of the chainwheel are angled slightly forward ensuring that the rope and the chain are smoothly guided in the wheel during anchor retrieval.

As the rope pulls into the wheel, the opposite facing inner ribs grip the rope in an undulating manner, securing the rope more firmly in a 'wave pattern' action that is far superior to the traditional 'jam cleat' manner of holding the rope compared to all other products on the market. Not only does this Wave Design™ hold the rope more securely, it is also kinder on the rope resulting in increased longevity of your anchor rode.





**3 YEAR**  
Limited Warranty



RC8

- Unique spacer tube design allows installation through virtually any deck thickness and the multiple mounting positions and self aligning gearbox ensure optimal location of gearbox and motor in virtually all installation situations.
- Full disassembly capability of topworks utilising handle provided, a screwdriver and an Allen key.
- The RC8 Series is manufactured from marine-grade 316 stainless steel for long term durability. The heavy duty stainless steel pressure arm is designed to effectively help grasp the rope/chain splice, giving the RC8 an unparalleled level of performance.
- In combination with a heavy duty, large wire diameter, stainless steel pre-loaded spring, the pressure arm always exerts maximum control pressure.
- The RC8 works just as effectively with all-chain rodes for those who desire a Low Profile, elegantly styled windlass on their foredeck.
  - Huge, through deck hawse pipe throat ensures easy entry of the rope/chain rode into and out of the anchor locker.
  - Cone type clutch/brake mechanism permits manual, 'free fall' anchoring.
    - Manual override using the emergency crank handle provided.
    - Sealed oil bath and marine-grade hard anodised, alloy gearbox provides high efficiency output drive via precision worm and worm wheel.

## SPECIFICATIONS

Model	RC8 6/7mm - 1/4"	RC8 8mm - 5/16"
Maximum Pull	350kg 770lbs	600kg 1320lbs
Chain Short Link	6mm/7mm 1/4"	8mm 5/16"
Rope Size (Nylon)* (3 strand or 8 plait recommended)	12mm 1/2"	14mm - 16mm 9/16" - 5/8"
Chain Speed (Anchor Retrieval)	28m/min 92ft/min	32m/min 105ft/min
Rope Speed (Anchor Retrieval)	24m/min 79ft/min	28m/min 92ft/min
Power Supply (DC)	12 or 24V	12 or 24V
Motor Power	600W	1000W
Net Weight	12.5kg 27.5lbs	16.5kg 36.3lbs

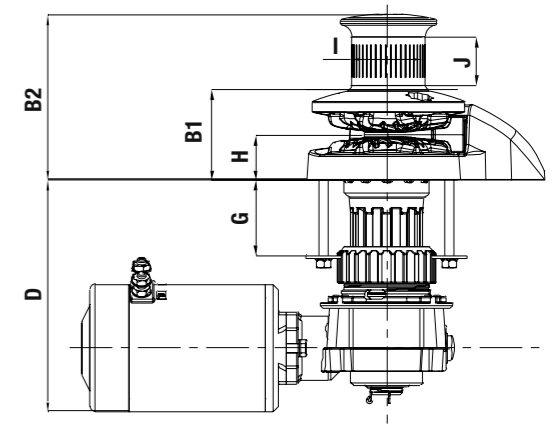
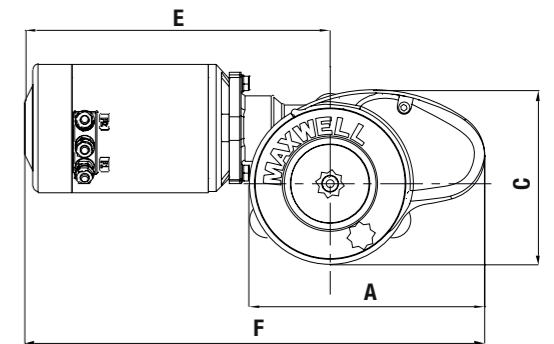
\* refer to owners manual for rope size variations.

## DIMENSIONS

Both Models	RC8 6/7mm - 1/4"	RC8 8mm - 5/16"
A	210mm 8 5/16"	210mm 8 5/16"
B1	83mm 3 5/16"	83mm 3 5/16"
B2 (with Capstan)	146mm 5 3/4"	146mm 5 3/4"
C	156mm 6 3/16"	156mm 6 3/16"
D	200mm 7 7/8"	208mm 8 1/4"
E	240mm 9 1/2"	272mm 10 3/4"
F	378mm 15"	410mm 16 1/4"
G (Std deck clearance) ^	65mm 2 1/2"	65mm 2 1/2"
H	40mm 1 5/8"	40mm 1 5/8"
I	66mm 2 5/8"	66mm 2 5/8"
J	44mm 1 3/4"	44mm 1 3/4"

^ extra deck clearance models available. Contact your Maxwell dealer.

The stainless steel RC6 and RC8 Series of automatic rope/chain anchor winches are Maxwell's newest additions to the highly successful RC10 Windlass Range



## Features

- The all new stainless steel RC8-6 fully automatic rope/chain windlass is designed to effortlessly retrieve and deploy 6mm/7mm (1/4") chain spliced to 12mm (1/2") three strand or 8-plait rope.
- The larger stainless steel RC8-8 can be used with 8mm (5/16") chain spliced to 14mm (9/16") three strand or 8-brait (plait) rope.
- The ingeniously designed rope/chain gypsy (chainwheel) is able to accommodate a wide range of chain pitch differences within the specified chain size diameters suitable for use with the RC8 Series.
- Sleek, Low Profile and MAX-Grip™ capstan drum versions are available to suit individual user preference.
- Simple two piece installation saves time and money and allows easy retrofitting without disassembly of the windlass.



RC8 Capstan version



## STANDARD EQUIPMENT REQUIRED FOR DUAL DIRECTION CONTROL

- Circuit breaker/isolator panel
- Dual direction solenoid pack
- Up/Down remote control panel
- Emergency crank/clutch release handle

## OPTIONS

- AutoAnchor™ Equipment
- Compact Remote
- Capstan model
- Foot Switches
- Chain Stopper or Chain Snubber

Every Maxwell automatic rope/chain windlass is available with all the necessary components for fully automatic dual direction control in a competitively priced package.

**Important:** Maxwell windlasses must be used in conjunction with a chain stopper and/or alternative snubbing device to take the load off the windlass while laying at anchor. The chain stopper and alternative snubbing system should also be used to secure the anchor in the fully raised position while under way.



RC8 with gearbox and motor





**3 YEAR**  
Limited Warranty

## SPECIFICATIONS

Model	RC10* 8mm - 5/16"	RC10* 10mm - 3/8"
Maximum Pull	700kg 1540lbs	850kg 1870lbs
Chain Short Link	8mm 5/16"	10mm 3/8"
Rope Size	14mm - 16mm 9/16" - 5/8"	16mm 5/8"
Chain Speed (Normal Working load)	24m/min 79ft/min	24m/min 79ft/min
Rope Speed (Normal Working load)	20m/min 65ft/min	20m/min 65ft/min
Power Supply (DC)	12 or 24V	12 or 24V
Motor (Watts)	1000W	1200W
Net Weight	19kg 42lbs	20kg 44lbs

\*8mm - 5/16" or 10mm - 3/8" chainwheels can be used on either of the above models

## DIMENSIONS

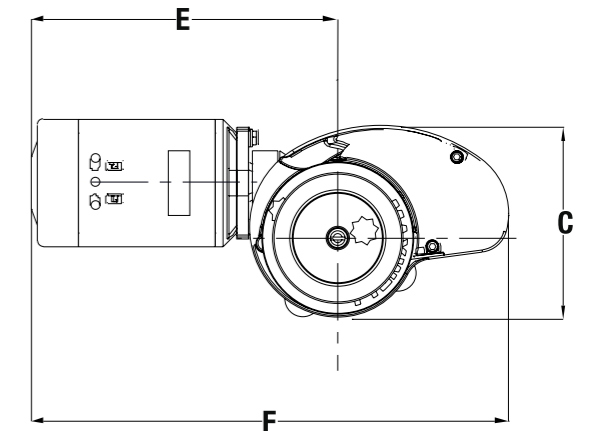
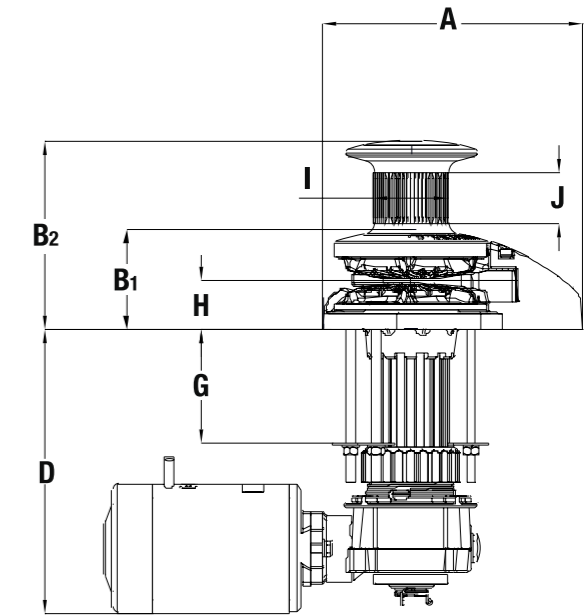
Model	RC10 8mm - 5/16"	RC10 10mm - 3/8"
A	230mm 9 1/8"	230mm 9 1/8"
B <sup>1</sup>	89mm 3 1/2"	89mm 3 1/2"
B <sup>2</sup> (with capstan)	168mm 6 5/8"	168mm 6 5/8"
C	170mm 6 3/4"	170mm 6 3/4"
D	251mm 10"	251mm 10"
E	272mm 10 3/4"	272mm 10 3/4"
F	410mm 16 1/4"	410mm 16 1/4"
G (Std deck clearance) ^	100mm 4"	100mm 4"
H	43mm 1 3/4"	43mm 1 3/4"
I	66mm 2 5/8"	66mm 2 5/8"
J	44mm 1 3/4"	44mm 1 3/4"

^ extra deck clearance models available. Contact your Maxwell dealer.

**Important:** Maxwell windlasses must be used in conjunction with a chain stopper and/or alternative snubbing device to take the load off the windlass while laying at anchor. The chain stopper and alternative snubbing system should also be used to secure the anchor in the fully raised position while under way.



The stainless steel RC10 Series windlasses proudly follow in the highly successful footsteps of Maxwell's previous fully automatic rope/chain anchor winches



**STANDARD EQUIPMENT REQUIRED FOR DUAL DIRECTION CONTROL**

- Circuit breaker/isolator panel
- Dual direction solenoid pack
- Up/Down remote control panel
- Emergency crank/clutch release handle

**OPTIONS**

- AutoAnchor™ Equipment
- Compact Remote
- Capstan model
- Foot Switches
- Chain Stopper or Chain Snubber

Every Maxwell automatic rope/chain windlass is available with all the necessary components for fully automatic dual direction control in a competitively priced package.

## Features

- The all new stainless steel RC10 fully automatic windlass series is designed to effortlessly retrieve and deploy 8mm (5/16") and 10mm (3/8") short link chain and 14mm (9/16") and 16mm (5/8") three strand or 8-braid (plait) rope.
- Sleek, Low Profile and MAX-Grip™ capstan drum versions are available to suit individual user preference.
- Simple two piece installation saves time and money and allows easy retrofitting without disassembly of the windlass. Unique spacer tube design allows installation through virtually any deck thickness and the multiple mounting positions and self aligning gearbox ensure optimal location of gearbox and motor in virtually all installation situations.
- Full disassembly capability of topworks utilising handle provided, a screwdriver and an Allen key. No special tools required.
- The RC10 is manufactured from marine-grade 316 stainless steel

for long term durability. The heavy duty stainless steel pressure arm, coupled with the unique rope/chain gypsy, is designed to effectively grasp the splice between rope and chain, giving the RC10 an unparalleled level of performance.

- In combination with a heavy duty, large wire diameter, stainless steel pre-loaded spring, the pressure arm pivots on a trouble free brass bearing, thereby exerting maximum control pressure on the rode and splice.
- The RC10 works just as effectively with all chain rodes for those who desire a Low Profile, elegantly styled windlass on their foredeck.
- Huge, through deck hawse pipe throat ensures easy entry of the rope/chain rode into and out of the anchor locker.
- Cone type clutch/brake mechanism permits manual, "free fall" anchoring.
- Sealed oil bath and marine-grade hard anodised, alloy gearbox provides high efficiency output drive via precision worm and wormwheel.